

**BUILDER**<sup>TM</sup>  
3D Printers B.V.

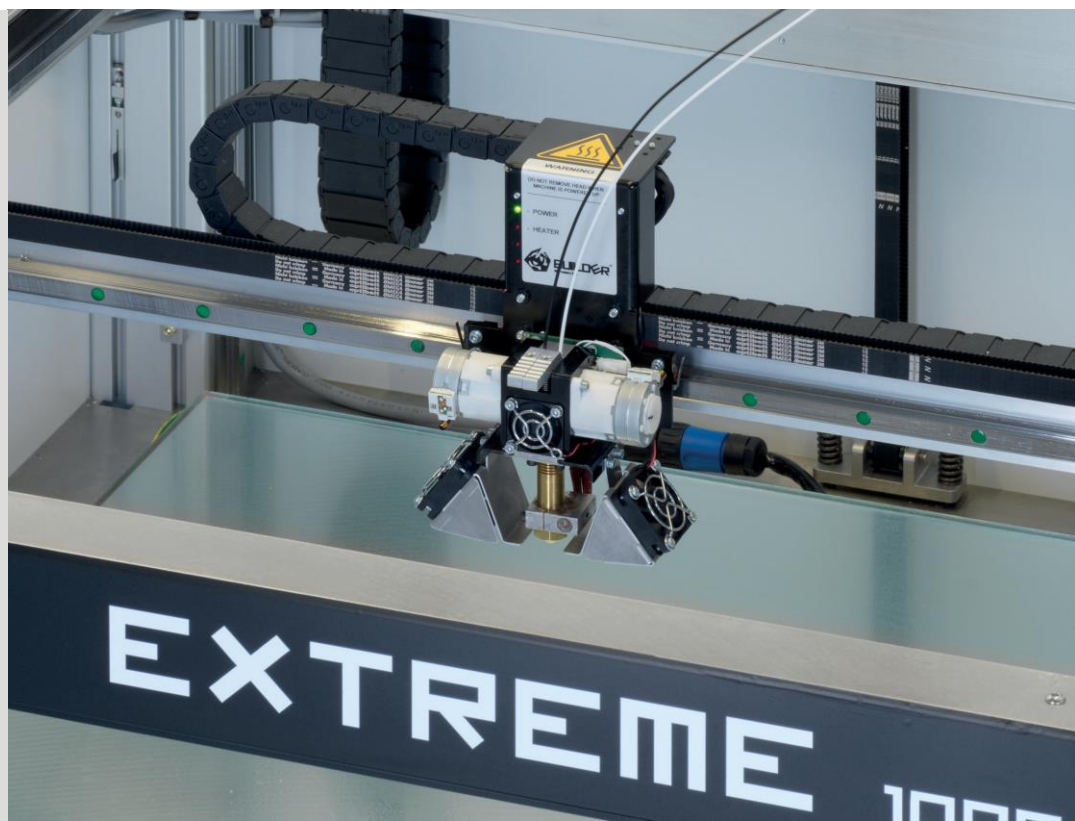
# Meet the Builder Extreme 1000 PRO

The Builder Extreme 1000 PRO is one of the biggest FDM 3D printers available today. With a print volume of 700x700x820 mm (XYZ), it enables you to print large scale prototypes/ objects in various materials. The large print volume and Dual- Feed extruder offer you complete design freedom.



## Dual-Feed extruder

The Builder Extreme 1000 comes with a versatile Dual-Feed extruder. The extruder is able to print Dual color/ material objects, but can also be used as a Mono extruder. Insert 2 spools of the same color, change the extruder ratio of both motors to 50% and the Dual becomes a Mono extruder. You can even use the Dual-Feed extruder to print color mixed objects as the extruder has 1 nozzle.



## 3D Prints

### Dual-Feed Build Size

#### Extreme 1000

700 x 700 x 820 mm

#### Travel speed

10 – 200 mm/s

#### Layer height resolution

0.1 – 0.9 mm

(depending on nozzle)

#### Filament detection

Yes

## General Specifications

### Outside dimensions

1010 x 1010 x 1550 mm

### Connections

SD Card, WiFi

**Nozzle diameter** 0.4 / 0.8 /

1.2mm

### Print speed

10 – 80 mm/s

### Print bed

Heated glass plate (up to 60 °C)

### Extruder

Unique Dual-Feed system

Removable extruder

### Camera

On-board (snapshots)

### Bed leveling

Semi-automatic

## Software

STL

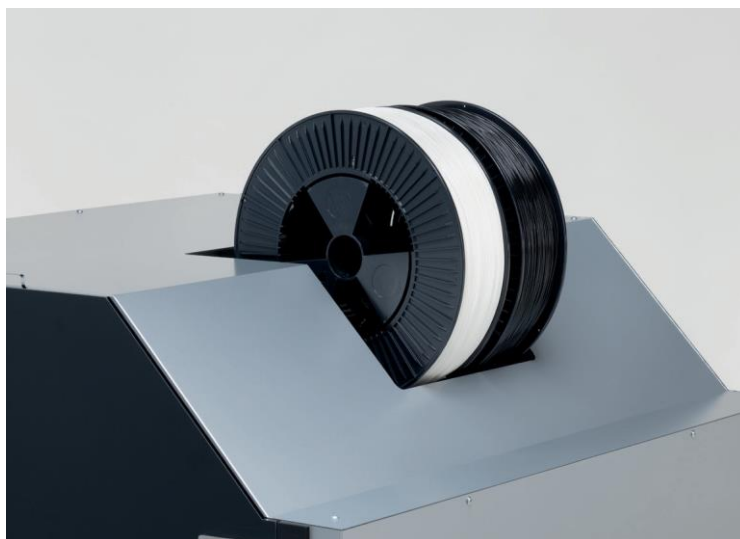
Simplify 3D

## 3D Print Material

PLA, Woodfill, PVA,  
Bronzefill, Flex, PET

1.75 mm

\* Subject to change



## Printing 24/7

3D printing is the perfect tool to reduce costs and save time, especially when printing 24/7. The Builder Extreme is a reliable machine which can print hundreds of hours without stopping. The Builder Extreme is made in the Netherlands with high quality components like industrial linear guides. Running out of filament? No problem. The filament detection will give a warning when the filament needs to be refilled.



## Interested?

### MAPTEC COMPUTER SYSTEMS

UAE Office (head Office)

Office 701, Wasl Business Center Bldg.  
Port Saeed Area, Deira, PO(98617) , Dubai,  
United Arab Emirates

T: +971 4 251 7734

F: +971 4 251 7736

### MAPTEC COMPUTER SYSTEMS

KSA Office (Branch Office)

Office 19, Majazeh Bldg.,  
Almuhamadiyah King Abdullah Street  
Intersection with Takhassosi Street,  
Riyadh, Kingdom of Saudi Arabia

T: +966 54 582 3123