



MAPTEC

COMPUTER SYSTEMS

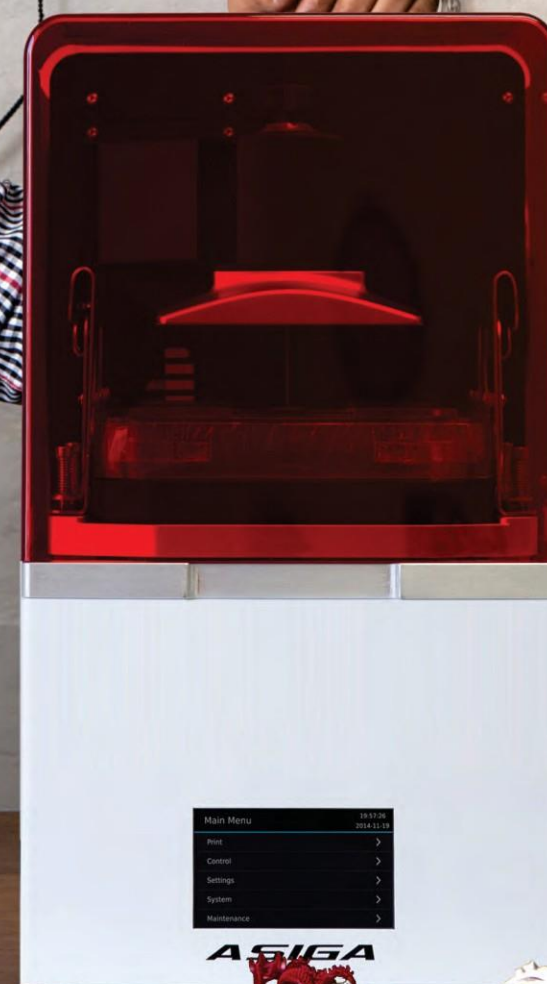
MANUFACTURING *TOMORROW*

ASIGA[®]
www.asiga.com

3D Printers for
Digital Jewelry
Manufacturing.

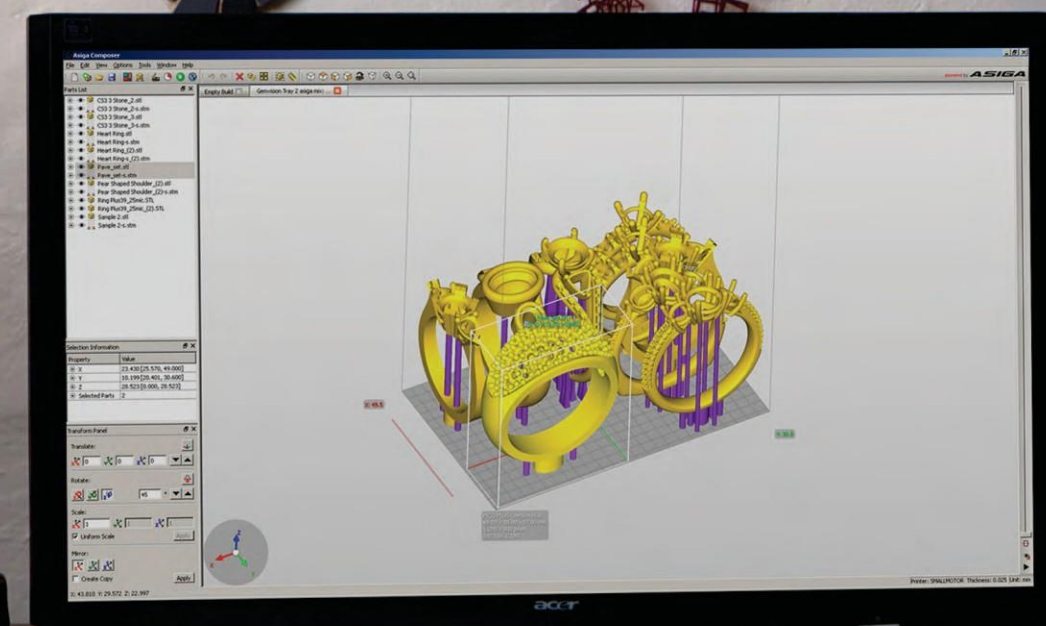


Being the creators of the precision desktop 3D printer market, we continue to offer precision, surface finish and product innovations designed to outperform any other.

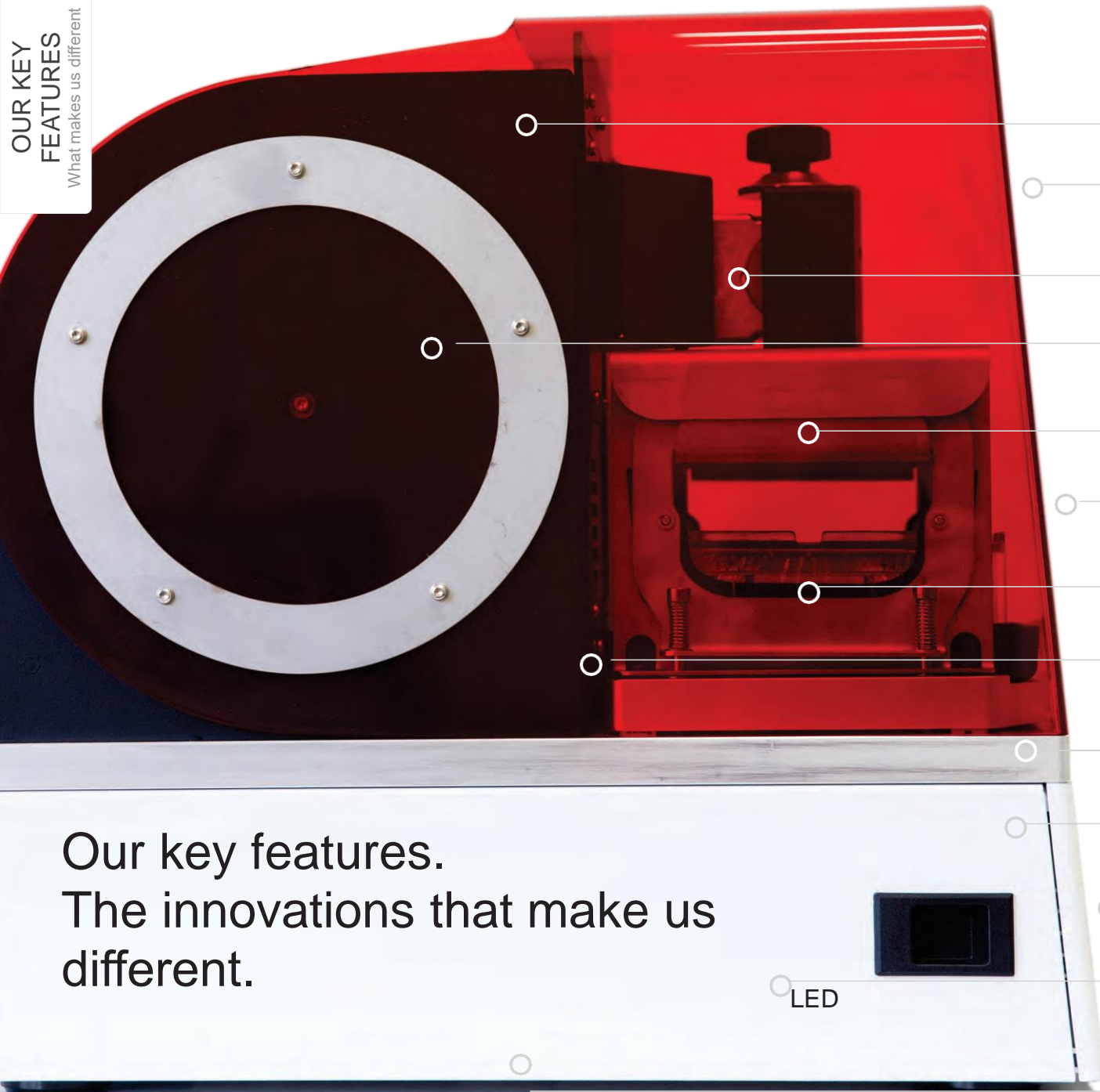


Main Menu 10:17:06
2014-11-19
Print >
Control >
Settings >
System >
Maintenance >

ASIGA



OUR KEY
FEATURES
What makes us different



Our key features.
The innovations that make us
different.


Wifi Enabled
connect wirelessly

High Impact Hood
UV blocking with excellent clarity

Single Point Calibration
calibrate in under 30 seconds

Auto Power-Off
energy saving mode

Quick Release
fast material change-over

Composer Software
intuitive user interface included

Open Material System
use any suitable 3rd party material

Environmental Control
reliable performance with every print

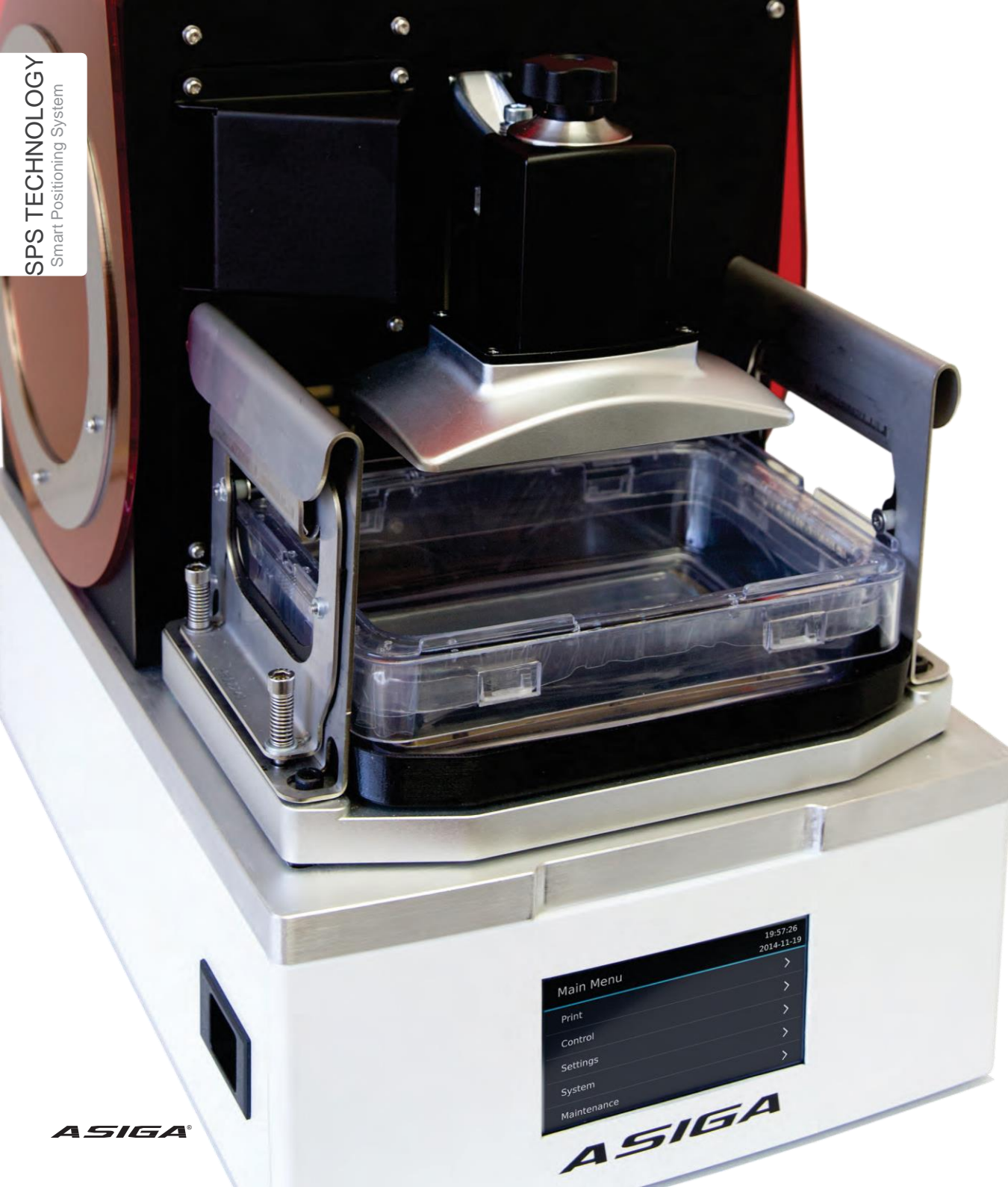
SPS Technology
active layer control for consistent output

Lifetime Technical Support
free and unlimited

Touch Screen Display
for greater user convenience

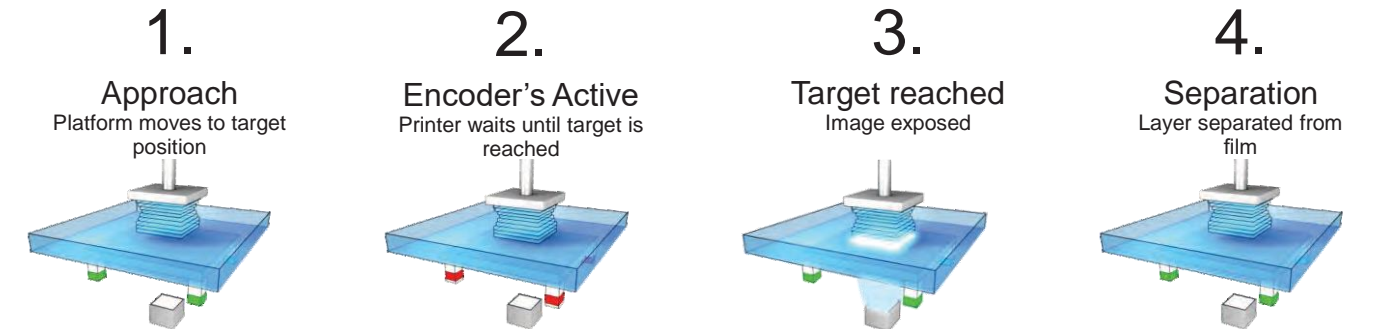
High Power UV
for long term reliability

Internal Radiometer
automatic LED power calibration



Our Smart Positioning System (SPS) Technology.

All MAX systems incorporate Asiga's proven SPS Technology sensor array that guarantees every model layer is formed precisely in minimal time.



The result is precision, speed and reliability that your business can depend on.

MAX Mini



Accurate, reliable, affordable.

MAXMini delivers Asiga's latest SPS technology in an economical format ideal for jewelry studios. Perfect for rapid production of jewelry casting patterns, rubber mold masters and visualization models.



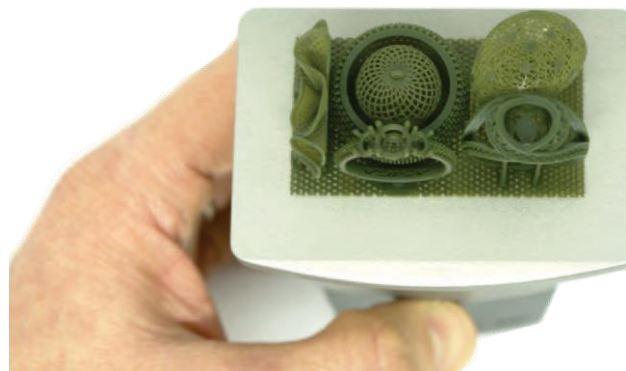
Printer Performance

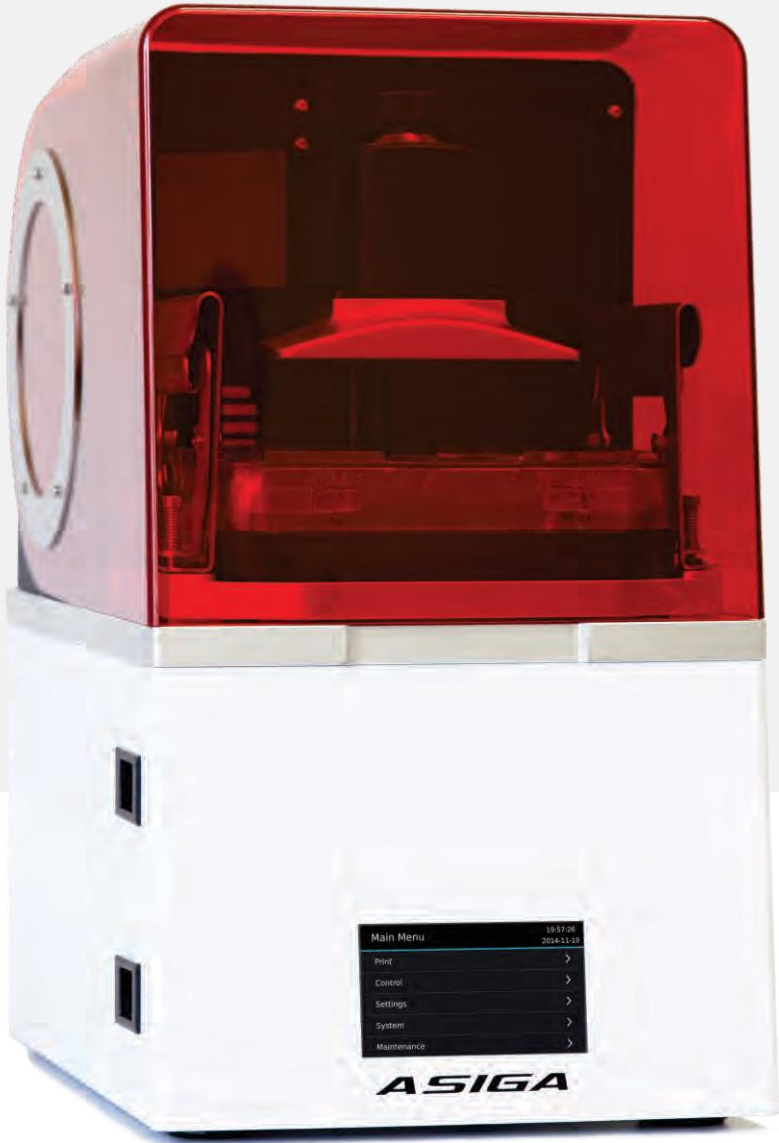
Print capacity	up to 15 rings (size dependant)
Print speed - 25µm layers	3.5 hrs (height of tallest piece 30mm)
Print cost (USD)	\$0.50 - \$2 per piece (weight/material dependant)

Printer Specification

Build size X, Y, Z	51.2 x 32 x 76mm* (2 x 1.26 x 3 inches)
Pixel size X,Y	39µm
Z resolution	Variable in 1µm increments
Light source	High-power 405nm LED
Material system	Open material system
File inputs	STL, SLC, STM
Software	Asiga Composer (included)
Network compatibility	Wifi, Wireless direct, Ethernet
Industry sectors	Jewelry manufacturing
System size	260 x 380 x 370mm (10.2 x 15 x 14.5 inches)
System weight	16.5Kg (packaged 19Kg)
Packaged size/weight	410 x 500 x 480mm (18.1 x 22 x 19.7 inches)
Power	12VDC 10A

* build envelope size may vary





M
A
X



Flexible precision.

Flexible precision. The MAX X is Asiga’s highest resolution jewelry production system with a re-configurable resolution of 27, 35 or 43 microns. This allows the system to be adapted to both extreme resolution and high productivity applications. Built on the extraordinary precision of Asiga’s SPS Technology, the MAX X delivers performance, reliability and flexibility for jewelers and casting houses.



Printer Performance

Print capacity	up to 40 rings (ring size dependant)
Print speed - 25µm layers	3.5 hrs (height of tallest piece 30mm)
Print cost (USD)	\$0.50 - \$2 per piece (weight/material dependant)



Printer Specification

MAX X27 Build size X, Y, Z	51.8 x 29.1 x 76mm* (2 x 1.14 x 3 inches)
MAX X35 Build size X, Y, Z	67.2 x 38 x 76mm* (2.6 x 1.5 x 3 inches)
MAX X43 Build size X, Y, Z	82.5 x 46.4 x 76mm* (3.24 x 1.82 x 3 inches)
Z resolution	Variable in 1µm increments
Light source	High-power 405nm LED
Material system	Open material system
File inputs	STL, SLC, STM
Software	Asiga Composer (included)
Network compatibility	Wifi, Wireless direct, Ethernet
Industry sectors	Jewelry manufacturing
System size inches)	260 x 380 x 505mm (10.2 x 15 x 19.8
System weight	19kg (packaged 21.5Kg)
Packaged size/weight	940 x 530 x 500mm (37 x 20.8 x 19.7 inches)
Power	12VDC 10A

* build envelope size may vary



MAX



Volume production on your desktop.

The MAX offers Asiga's largest build envelope with the delicate precision required for the production of beautiful jewelry patterns. The larger print volume allows jewelers, artists and casting houses to produce sculptures, bangles, and large quantities of casting patterns in a single print.



Printer Performance

Print capacity	up to 80 rings (size dependant)
Print speed - 25µm layers	3.5 hrs (height of tallest piece 30mm)
Print cost (USD)	\$0.50 - \$2 per piece (weight/material dependant)



Printer Specification

Build size X, Y, Z	119 x 67 x 76mm* (4.68 x 2.63 x 3 inches)
Pixel size X,Y	62µm
Z resolution	Variable in 1µm increments
Light source	High-power 405nm LED
Material system	Open material system
File inputs	STL, SLC, STM
Software	Asiga Composer (included)
Network compatibility	Wifi, Wireless direct, Ethernet
Industry sectors	Jewelry manufacturing
System size	260 x 380 x 370mm (10.2 x 15 x 14.5 inches)
System weight	16.5Kg (packaged 19Kg)
Packaged size/weight	410 x 500 x 480mm (18.1 x 22 x 19.7 inches) Power 12VDC 10A

* build envelope size may vary



Which Asiga MAX is for you?



MAXMini

11x rings
Build size: 51.2 x 32 x 76mm (2 x 1.26 x 3 inches)
10 micron build time: 8hrs
25 micron build time: 3.5hrs



MAX X27

9x rings
Build size: 51.8 x 29.1 x 76mm (2 x 1.14 x 3 inches)
10 micron build time: 8hrs
25 micron build time: 3.5hrs



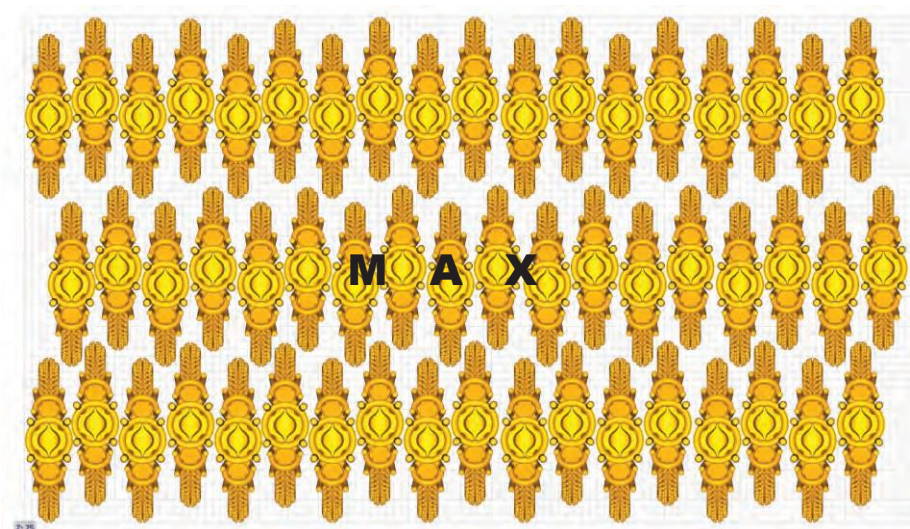
MAX X35

18x rings
Build size: 67.2 x 38 x 76mm (2.6 x 1.5 x 3 inches)
10 micron build time: 8hrs
25 micron build time: 3.5hrs



MAX X43

26x rings
Build size: 82.5 x 46.4 x 76mm (3.24 x 1.82 x 3 inches)
10 micron build time: 8hrs
25 micron build time: 3.5hrs



MAX

54x rings
Build size: 119 x 67 x 76mm* (4.68 x 2.63 x 3 inches)
10 micron build time: 8hrs
25 micron build time: 3.5hrs



3D printing materials for jewelry manufacturing,
from casting wax to rubber molding.

SuperCAST^{HD}

Direct Casting
Resin material
for Gold Alloys



SuperWAX

Direct Casting
WAX material for
Platinum, Gold Alloys



SuperCAST

Direct Casting
Resin material
for Gold Alloys



FusionGRAY

Vulcanized
Rubber Molds
& RTV

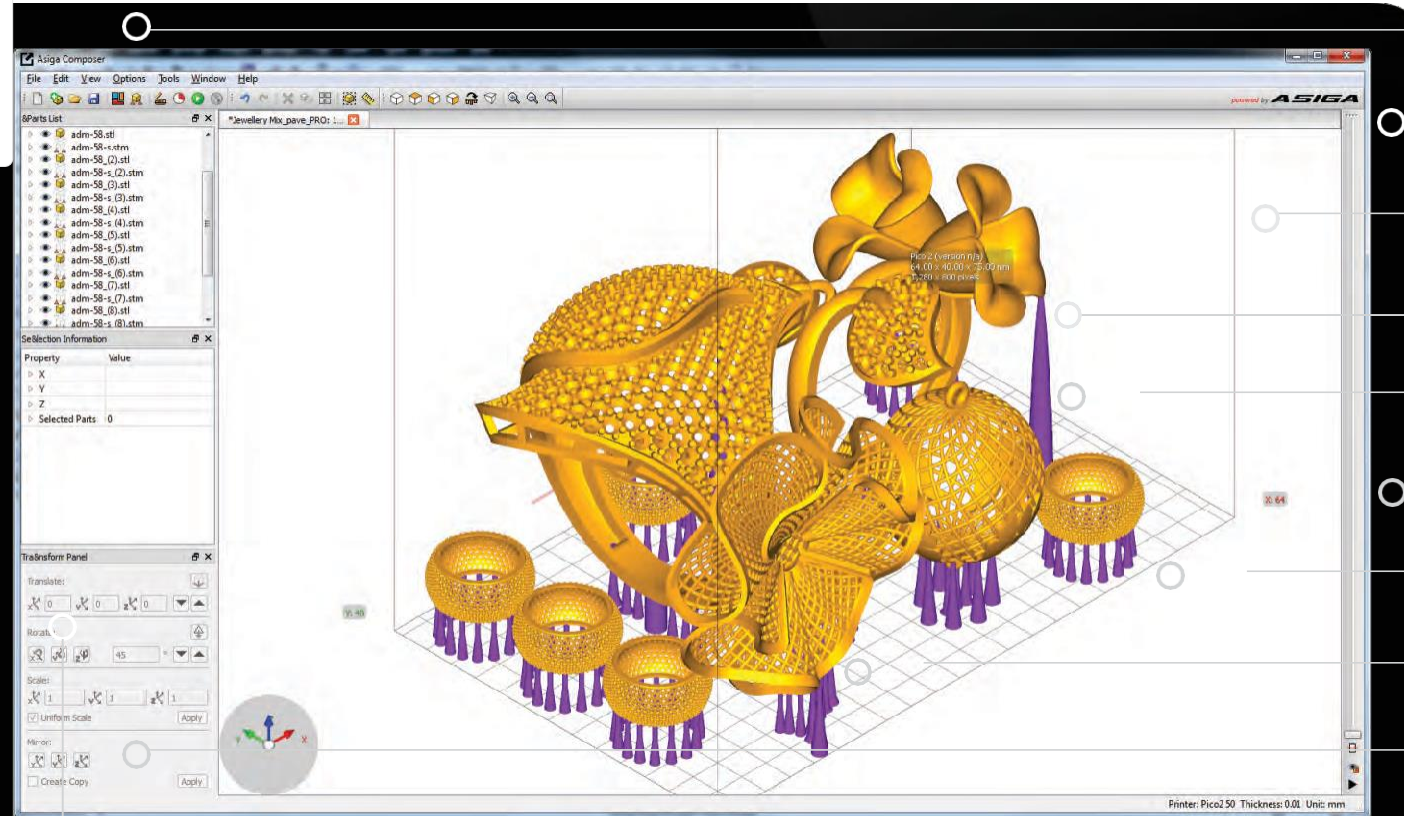


Our Open Material System allows for printing
with any suitable material from any material
manufacturer.



Available in both 500ml & 1l bottle sizes





Auto-Supports
for greater user efficiency

Remote Control
login to your 3D printer remotely

Build Time Estimator
schedule workflow

STL / SLC or Both
load STL & SLC into the same build

Flexible Supports
avoid support collisions

Multi-Stacking
maximize Z height usage

Dynamic Array
maximize build area usage

Add Casting Sprue
streamline casting workflow

Load Multiple Builds
onboard PC to store multiple builds

Final Check
measurement tool

License Free
free updates. forever.

User Control
full user access to build settings

Composer is the software interface to all our
3D Printers. Powerful, intuitive and free.

Multi-Operating System
Apple, Windows & Linux



ASIGA

Free and unlimited lifetime technical support.
Local sales, service and support via our
global reseller network.

Affordable Digital Manufacturing,
it's something Asiga invented.



MAPTEC

COMPUTER SYSTEMS

MANUFACTURING *TOMORROW*

U.A.E. Office:

Office 701, Wasl Business Centre
Port Saeed, Deira, Dubai
United Arab Emirates
P.O. Box 98617

Tel: +971 4 251 7734

Fax: +971 4 251 7736

Email: info@maptec.ae

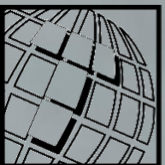
K.S.A. Office:

A. Shifa Area, Al-Mussa Industrial Area
Al-Nasser Street, Cross Hayel Road
Riyadh, Kingdom of Saudi Arabia

Tel: +966 545 823123

Fax: +971 4 251 7736

Email: info@maptec.ae



MAPTEC

COMPUTER SYSTEMS

MANUFACTURING *TOMORROW*



ASIGA®

www.asiga.com